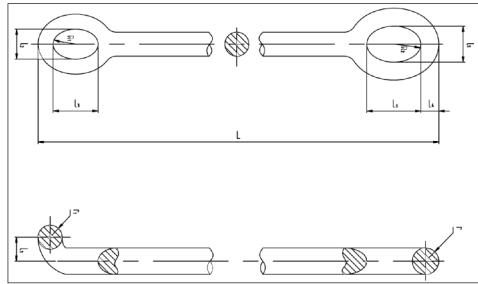
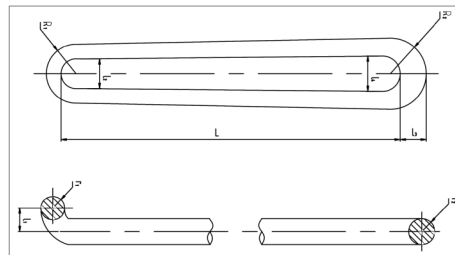


5.3.1 Type DH Single Arm Elevator Links



Model	Connecting Sizes between Elevator Link Lower Ears and Elevators mm (in)					Connecting Sizes between Elevator Link Upper Ears and Drilling Hooks mm (in)					Overall Length mm (ft)	Rated Capacity kN (lbs)
	r_1	R_1	l_1	l_2	l_3	r	R_2	l_4	l_5	l_6		
DH360	20 (3/4)	51 (2)	20 (3/4)	100 (3-15/16)	150 (5-7/8)	22 (7/8)	38 (1-1/2)	60 (2-3/8)	121 (4-3/4)	180 (7)	1200 (3.94)	360 (80,000)
DH585	22 (7/8)	51 (2)	20 (3/4)	100 (3-15/16)	150 (5-7/8)	22 (7/8)	64 (2-1/2)	70 (2-3/4)	121 (4-3/4)	180 (7)	1100 (3.60)	585 (130,000)
DH900	22 (7/8)	51 (2)	20 (3/4)	100 (3-15/16)	150 (5-7/8)	29 (1-1/8)	64 (2-1/2)	80 (3-1/8)	140 (5-1/2)	190 (7-1/2)	1500 (4.92)	900 (200,000)
DH1350	24 (15/16)	51 (2)	25 (1)	100 (3-15/16)	150 (5-7/8)	29 (1-1/8)	64 (2-1/2)	100 (3-15/16)	140 (5-1/2)	210 (8-1/4)	1800 (5.90)	1350 (300,000)
DH2250	31 (1-1/4)	70 (2-3/4)	30 (1-3/16)	140 (5-1/2)	200 (7-7/8)	35 (1-3/8)	102 (4)	140 (5-1/2)	200 (7-7/8)	250 (9-7/8)	2700 (8.86)	2250 (500,000)
DH3150	37 (1-1/2)	70 (2-3/4)	35 (1-3/8)	140 (5-1/2)	200 (7-7/8)	35 (1-3/8)	102 (4)	140 (5-1/2)	200 (7-7/8)	250 (9-7/8)	3300 (10.83)	3150 (700,000)
DH4500	48 (1-7/8)	83 (3-1/4)	50 (2)	170 (6-11/16)	250 (9-7/8)	48 (1-7/8)	121 (4-3/4)	160 (6-1/4)	240 (9-1/2)	300 (11-13/16)	3600 (11.81)	4500 (1,000,000)
DH6750	57 (2-1/4)	127 (5)	50 (2)	190 (7-1/2)	318 (12-1/2)	63 (2-1/2)	127 (5)	190 (7-1/2)	262 (10-5/16)	305 (12)	3660 (12)	6750 (1,500,000)

5.3.2 Type SH Double Arm Elevator Links



Model	Connecting Sizes between Elevator Link Lower Ears and Elevators mm (in)				Connecting Sizes between Elevator Link Upper Ears and Drilling Hooks mm (in)				Overall Length mm (ft)	Rated Capacity kN (lbs)
	r_1	R_1	l_1	l_2	r	R_2	l_3	l_4		
SH225	15 (9/16)	29 (1-1/8)	20 (3/4)	58 (2-1/4)	22 (7/8)	38 (1-1/2)	35 (1-3/8)	90 (3-1/2)	600 (1.96)	225 (50,000)
SH360	20 (3/4)	51 (2)	20 (3/4)	100 (3-15/16)	22 (7/8)	38 (1-1/2)	45 (2-3/4)	100 (3-15/16)	1100 (3.60)	360 (80,000)
SH585	22 (7/8)	51 (2)	20 (3/4)	100 (3-15/16)	22 (7/8)	64 (8-1/8)	64 (2-1/2)	120 (4-3/4)	1100 (3.60)	585 (130,000)
SH675	22 (7/8)	51 (2)	20 (3/4)	100 (3-15/16)	29 (1-1/8)	64 (8-1/8)	75 (2-15/16)	160 (6)	1500 (4.92)	675 (150,000)
SH900	22 (7/8)	51 (2)	25 (1)	100 (3-15/16)	29 (1-1/8)	64 (8-1/8)	80 (3-1/8)	160 (6)	1500 (4.92)	900 (200,000)
SH1350	24 (15/16)	51 (2)	35 (1-3/8)	100 (3-15/16)	29 (1-1/8)	64 (8-1/8)	100 (3-15/16)	160 (6)	1700 (5.57)	1350 (300,000)