



PROPOSAL SUMMARY

MAIN CARRIER AND ACCESSORIES

- XJ750 Carrier w/ (2) CAT C15 (540hp)
- (2) Parker P25 Hydraulic System;
- JC28/11 Drawworks
- BZX180B Compounding Gear Box;
- ZJ30CZ-04 Rotary Drive
- 24V DC Carrier Battery
- BA-921 Bendix Air System
- XD70/14x8 Chassis
- * Allison S5610 Transmission
- * Allison TC680 Torque Converter
- * Eaton WCB324 Auxiliary Brake
- * JX240 Angle Gear Box
- * ATD318 Rotary Clutch
- * 110V AC 60 Hz Lighting
- * YJ3C/YJ5B 3&5 Ton Hydraulic Winch
- * FK40A 1,585Gal. Cooling Water Tank

MAST AND ACCESSORIES

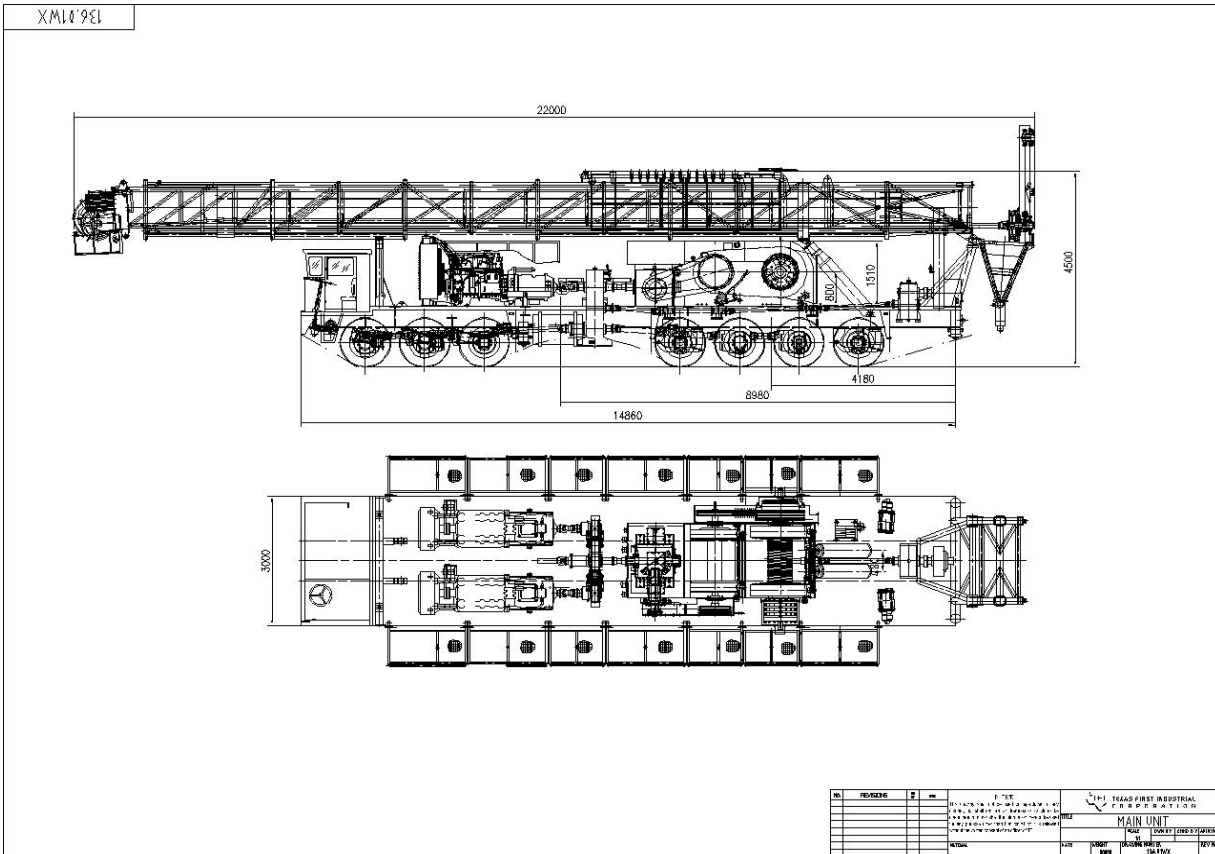
- JJ180/38 Mast (400K HL, 125' height)
- 4" NPT 5K WP Standpipe
- JZ24 Deadline Anchor
- * TC180 6x5 (400K HL) Crown Block
- * 4" 5K WP Rotary Hose

SUBSTRUCTURE AND ACCESSORIES

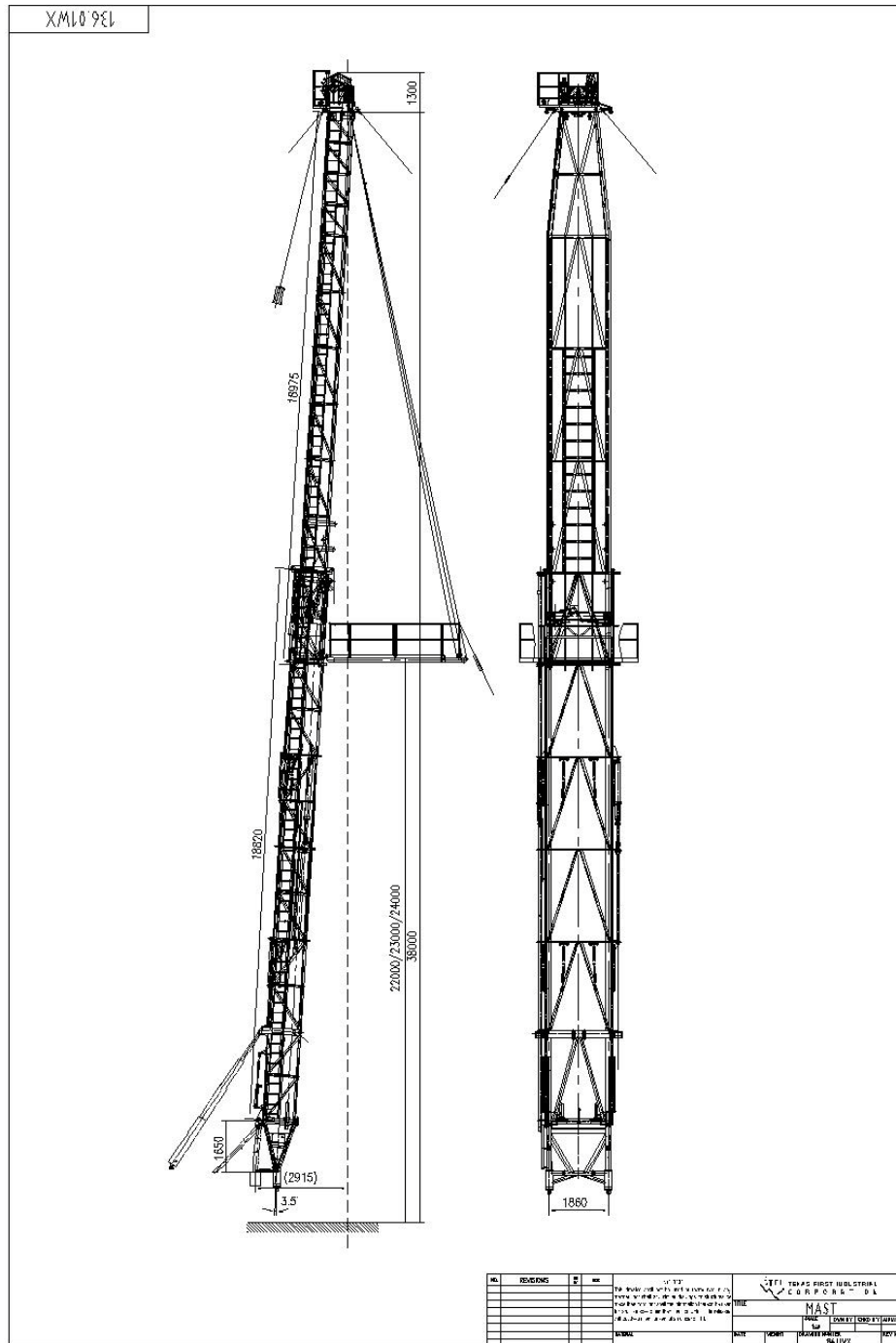
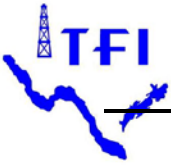
- ZZT180 Substructure (400K SL 19.7' height/ 16.1' under rotary)
- Ramp & V-Door; Catwalk; Escape Slide
- ZP275 27-1/2" Rotary Table w/ Split Bushing
- * Mud Boat; Mast Base
- * Ladders/Rails
- * BOP Handling System

TRAVELLING EQUIPMENT

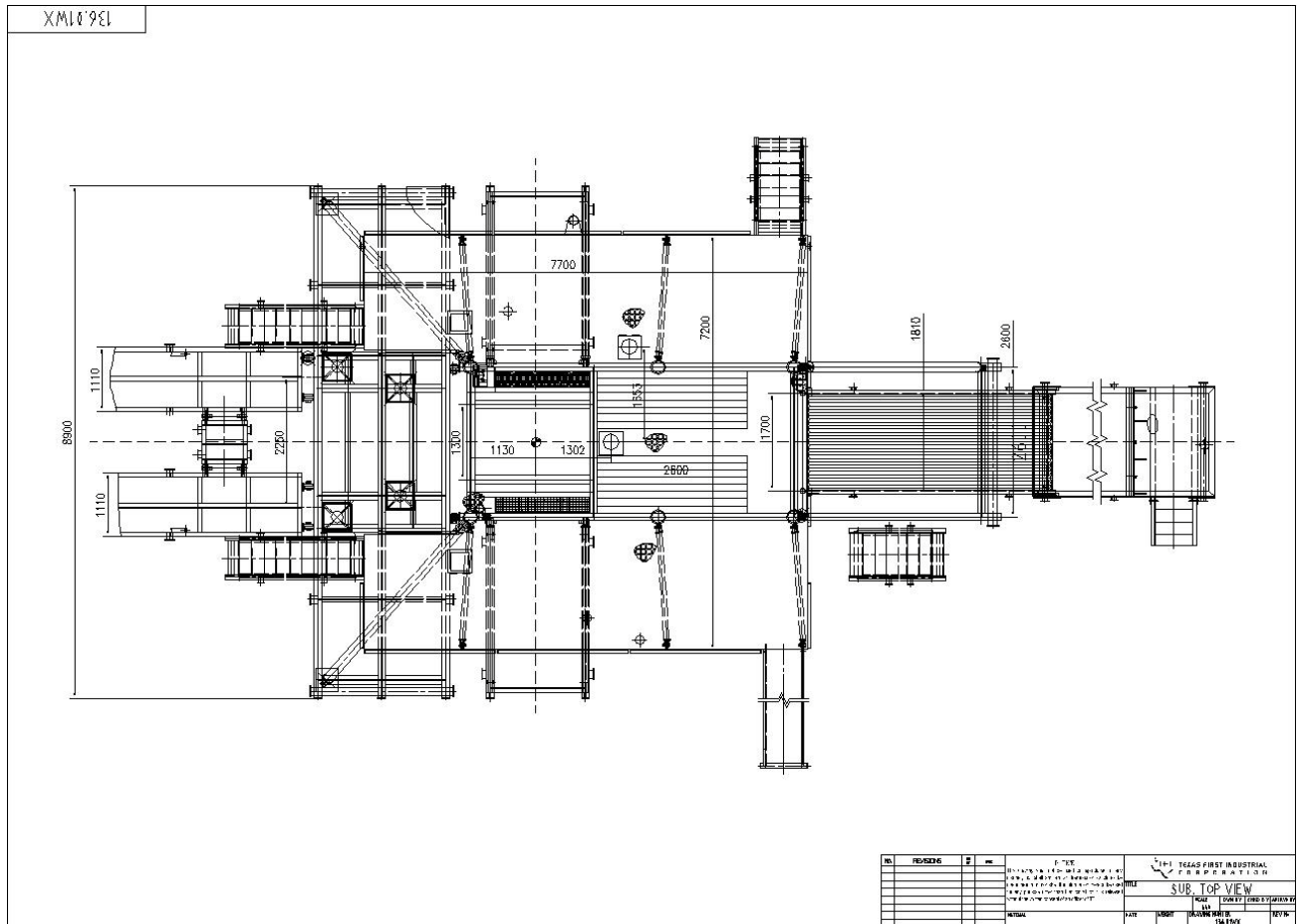
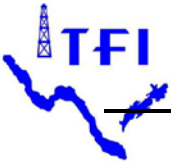
- YG225 (250 ton) 36x5 Block/Hook Combo
- * SL225 (250 ton) Swivel



Main Unit



Mast Schematic



Sub. Top View

