



## PACKAGE SUMMARY

\*ALL Equipment Listed below BRAND NEW\*

### CARRIER MAIN UNIT

- ZJ40 Carrier w/ (2) CAT C18 (630hp);
- (2) Parker P25 Hydraulic System;
- JC28/11 Drawworks;
- BZX180B Compounding Gear Box;
- ZJ30CZ-04B Rotary Drive;
- 24V DC Carrier Battery;
- BA-921 Bendix Air System;
- XD70/14x10 Chassis;
- Weight Indicator;
- \* (2) Allison S6610HR Transmission (710HP);
- \* (2) Allison TC680 Torque Converter;
- \* EATON WCB236 Auxiliary Brake;
- \* JX240 Angle Gear Box;
- \* ATD318 Rotary Clutch;
- \* 110V AC 60Hz Lighting;
- \* YJ3C/YJ5B 3&5 Ton Hydraulic Winch;
- \* FXH50E 2,377Gal. Cooling Water Tank;
- \* Deadline Anchor;

### MAST

- JJ225/38 Mast (500K SHL);
- 4" NPT 5K WP Double Standpipe;
- YG225 Hook Block 36x5 Block, 1-1/4" Groove
- \* TC225 6x5 Crown Block;
- \* (2) ID 4" 5K WP Rotary Hose, 58' length;
- \* SL225 Swivel, 5000 psi working pressure

### SUBSTRUCTURE

- ZZT225D Substructure (500K SL);
- Ramp & V-Door;
- Ladders/Rails;
- Full furnished Dog House;
- \* Mud Boat; Mast Base;
- \* Catwalk; Escape Slide;
- \* ZP275 53-1/4" Rotary Table w/ Split Master Bushing;
- \* BOP Handling System;

### GENERATOR SYSTEM

- (2) Caterpillar C15/ with SR4B Gen Sets
- Connecting cables/fuel hose in
- \* Power Distribution Tank
- \* 32.8' x 9.5' x 9.2' Generator Housing

### MCC HOUSE/ AIR COMPRESSORS

- Schneider MCC (460V AC/60Hz/3P) system w/ (4)200A/460V AC/60Hz OC & (1)32A/110V AC/60Hz IC; Sullair LS-12-50-HHAC Air Compressor; HDS-6NF Air Dryer;
- 110V AC/60Hz/2P Lighting System complete w/ Controller; (2) Soft Starters;
- 440Gal. Air tank complete w/ steam separator;
- (2) Motor Control Cabinet;
- MPF250 Air Prefilter; MPH250 Air Backfilter;
- Packaged complete within a 33' x10' x8' (MCC) housing;



### SOLID CONTROL

- Derrick FLC DUAL 503 Shale Shaker;
- Vacuum Degasser;
- HYQ800 Gas Separator;
- (2) SB8x6x14 Centrifugal pump; SB4x3x13 Grout Pump;
- (8) NJ-11 14.75hp Mud Agitators;
- (3) Tanks totaling 1049bbbls;
- IS100-80-160 Water Pump;
- \* Derrick FLC-503 Mud Cleaner;
- \* LW500x1000N Centrifuge;
- \* (10) DN80 Mud Gun;
- \* 1K GPM Mud Hopper;
- \* 20bbbls Pill tank;
- \* YB2-160M-4 Feeder Pump;
- \* Industrial Water Tank 377bbbl;

### MUD PUMPS

- (2) Unitized TFI F1000 Mud Pump w/ CAT 3508C Diesel Engine with National type Torque Converter mounted On Oilfield Skids;

### WELL CONTROL

- Shaffer SL Type 13-5/8" 5M Annular & Double Ram BOP;
- 13-5/8" 5M Drilling Spool;
- FKQ480-5 5-station BOP Closing Unit;
- 3-1/8" 5M Choke Manifold; Kill Manifold;

### WELLSITE LIGHTING

- Wellsite Lighting explosion/water proof API RP500 standard fluorescent lamps (110V, 60Hz AC);

### FUEL & WATER TANKS

- (2) YG50-200(1)B Elevated Fuel Tank & Fuel Tank;
- (1) YG50-200(1) B Elevated Water Tank;
- 29.52'x10.49'x9.51' Potable Water Tank;

### HANDLING TOOLS

- DH250 Elevator Links;
- 5" 250ton DDZ250 DP Elevator;
- 5" SDML DP Slip;
- ZQ203-125 Hydraulic Power Tong;
- \* 3-1/2" 250ton DDZ250 DP Elevator;
- \* 3-1/2" SDML DP Slip;
- \* Type DB90 Manual Tong Set;
- \* (2) Y15160 Hydraulic Cathead;

### DRILING INSTRUMENTATION

- SK-2Z09 Drilling Instrumentation System.
- Laptop;
- Tong Torque Indicator;
- TFT Rig Floor display panel;
- \* (4) Parameters; SK-9N11-A Barrier Box;
- \* Hook Load Indicator; Rotary Torque Indicator;
- \* Pump Pressure & Rate Indicator;



**RIG PACKAGE LAYOUT AND SCHEMATIC**

Fig. 1 Rig Package Layout

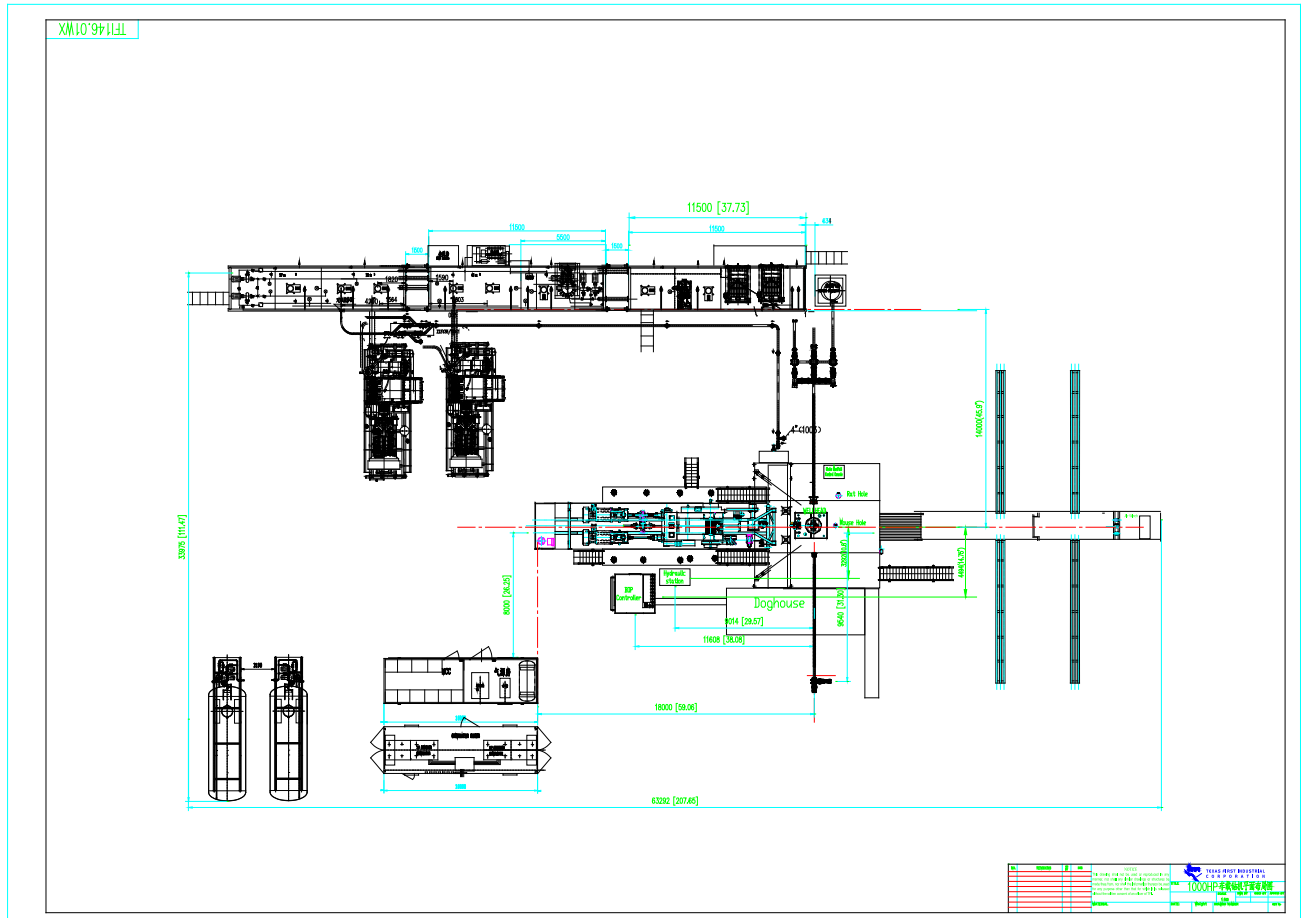


Fig. 2 Rig Operating View

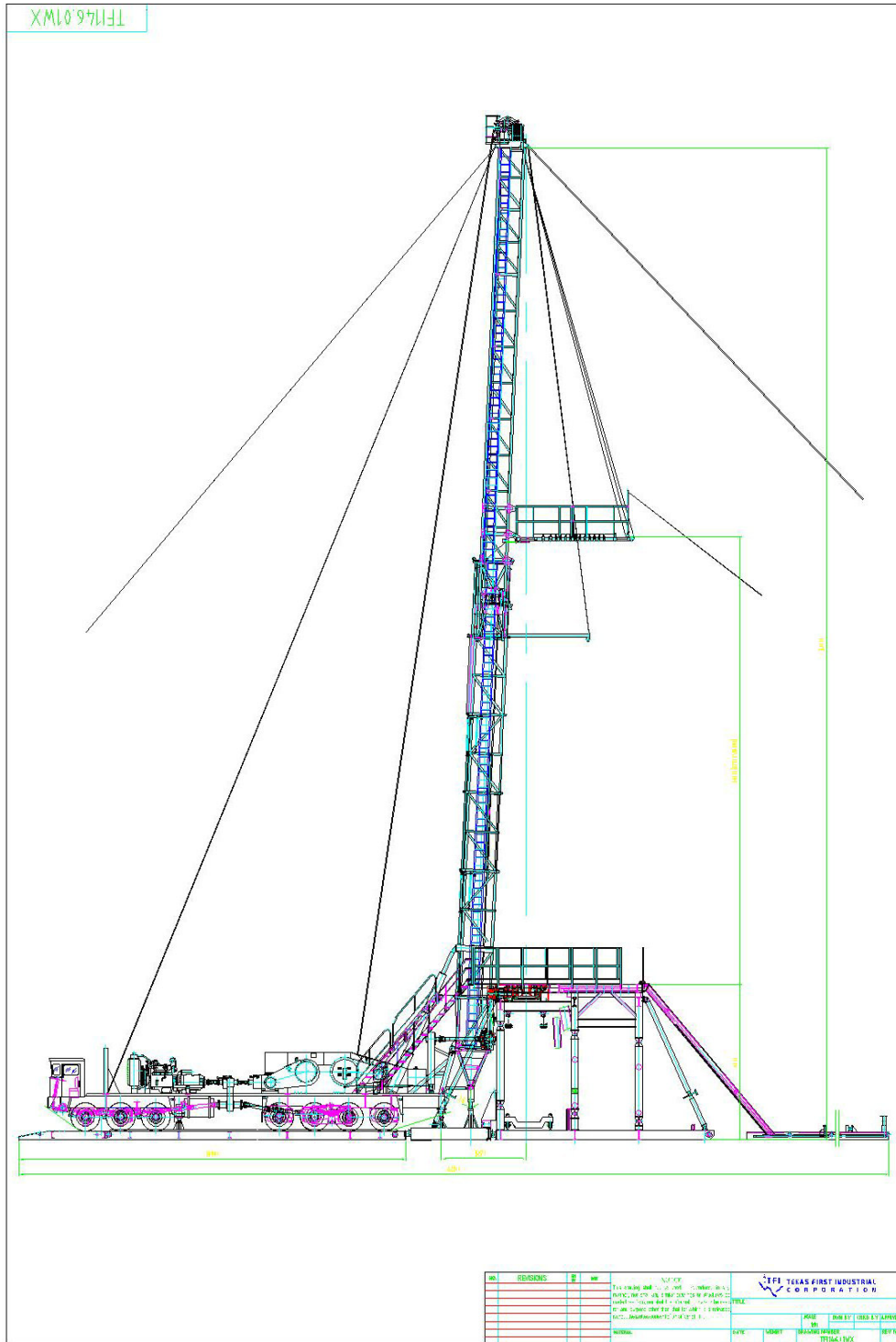




Fig. 3 Main Unit Schematic

